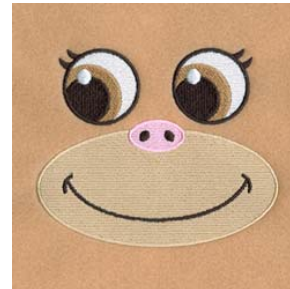




Materials:

- **1 Brown bath towel***
- **1 Brown hand towel***
- **1 Tan washcloth***
- **Tear away backing**
- **Thread to match towel colors**
- **Poly-fil stuffing**
- **Fabric chalk or marker (optional)**
- **Straight pins**
- **Dowel**
- **Computer and printer**
- **Paper (tracing paper – optional)**
- **Scissors**
- **Ruler**

Listed below are the designs used in this project.



Monkey Robe Face
CD071211TL



Monkey Robe Hand
CD071211TM



Monkey Robe Ear CD071211TN

* The towels listed above are specifically for the monkey bathrobe. The amount of towels and colors for each critter bathrobes will be different. Please see the last page.

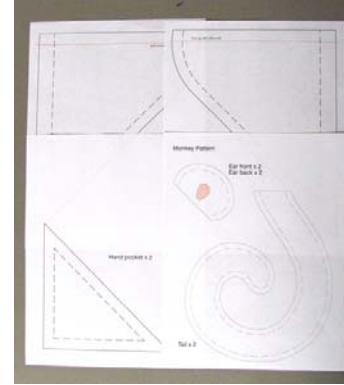
Before you start please read through all instructions.

Step 1:

Open and print the following using Adobe Acrobat or Adobe Reader:

- Hand Pocket CKB Pattern.pdf*
- Hood CKB Pattern.pdf*
- Monkey CKB Pattern.pdf

Cut each of the patterns out, some of them will need more than one copy.

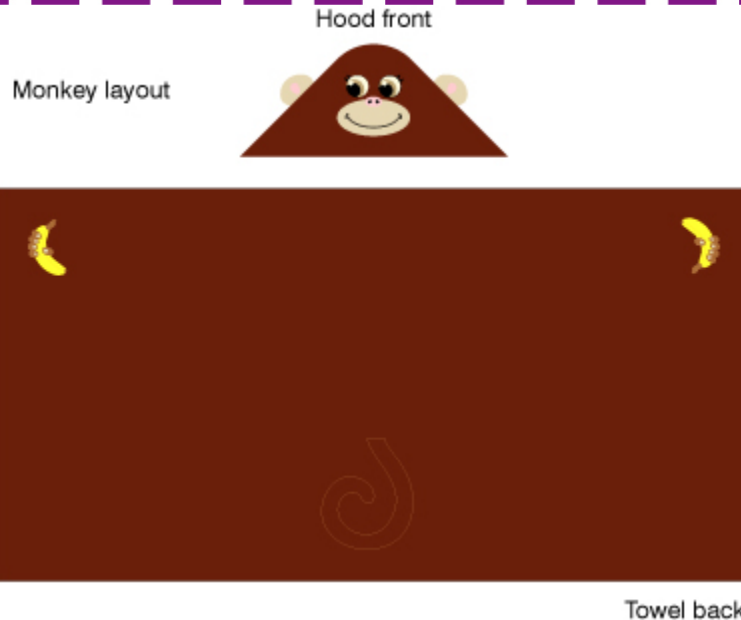


*The Hand Pocket and Hood CKB Pattern files will be needed for each of the Critter bathrobes.

Step 2:

Place the patterns on your hand towel and washcloth. Using a fabric marker, trace the outline of the templates on the towels.

(Place the patterns that need to be embroidered near the center if possible to make it easier to hoop and embroider them.)



Step 3:

Embroider the designs on the towels.

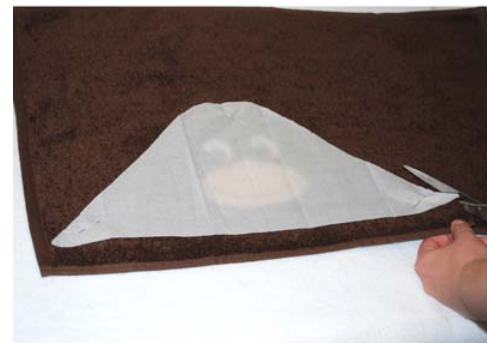
- **Monkey Robe Hand** – Top side of bath towel in the top 2 corners (The fingers should be facing the edge of the towel on each side. See Monkey layout found in the Monkey CKB Pattern.pdf file)
- **Monkey Robe Face** – Inside 1 of the hood templates on hand towel
- **Monkey Robe Ear** – Inside 2 of the ear templates on the wash cloth

At this time you can also embroider other elements onto the bath towel. For example: On the Ladybug you can embroider the dots and flower(s).



Step 4:

After all of the designs have been embroidered on the hand towel and wash cloth, cut along the template lines you have made with the fabric marker. You can also replace the template paper and use that as a guide to cut the fabric with.



Step 5:

Place the front and back ear and tail pieces right sides together and pin them. Then sew them together using a ¼” hem, leaving the bottom of each open.

(Do not sew the hood together yet.)



Step 6:

Turn the ears and tail right side out and stuff them. Use the dowel to turn the tail inside out and to stuff it. Sew the ears and tail together to keep the stuffing in.



Step 7:

Hem the bottom of each hood piece separately with a 1/2" hem.



Step 8:

Put the hood and ear pieces together.

- Back of hood right side up.
- Ear pieces right side down.
- Front of hood right side down.

Pin the hood & ears together.



Step 9:

Sew the hood and ears together with a 1/4" hem leaving the previously hemmed bottom section open.

(You can reinforce the hood by sewing a zigzag stitch back over the 1/4" hem you have just sewn.)



This is how the finished hood should look at this point.



Step 10:

Place the bath towel right side down and the hood right side up. Measure the bath towel so that you can place the hood at the center top. Pin the back panel of the finished hood to the towel.



Step 11:

Sew the hood onto the bath towel. Go over it twice to help reinforce it.



Step 12:

Hem all 3 sides of the hand pocket triangles using $\frac{1}{4}$ " to $\frac{1}{2}$ " hem.



Step 13:

Pin the hand pockets to the back top 2 corners of the bath towel.



Step 14:
Sew the pockets onto the bath towel.



Step 15:
Sew the tail to the bottom of the bath towel.
See Monkey layout page for placement.



Finished Bathrobes



Listed below are the suggested towel counts and colors.
Please feel free to use any color of towels that you would like.

Critter Kid Bathrobe	Bath towel	Hand towel	Wash cloths
Bear	1 Brown	1 Brown	
Bunny	1 Cream	1 Cream	
Cat	1 Light Grey	1 Light Grey	1 Grey
Dog	1 Tan	1 Tan	1 Dark Tan
Duck	1 Cream	1 Cream	
Fish	1 Any	1 Any	
Frog	1 Green	1 Green	1 White
Ladybug	1 Red	1 Black	
Lamb	1 Cream	1 Cream	
Monkey	1 Brown	1 Brown	1 Tan
Mouse	1 Grey	1 Grey	1 Lt Grey
Pig	1 Pink	1 Pink	

Thank you for your purchase.