



**Materials:**

- 1 Key Chain Charm Embroidery Design**
- 2 Pieces of Tear Away Backing**
- Bobbin thread to match the thread color of the last color stop**
- 2 Appliqué fabric pieces**
- Spray Adhesive**
- Key Chain Ring**
- Ribbon**
- Scissors**
- Tape**

(We used PSA Twill, pressure sensitive twill, for our appliqué pieces.)  
(Please let us know if we can cut the appliqué pieces for you)  
(You can also cut your own fabric to use.)

**Step 1:**

**First hoop 2 pieces of tear away backing in your hoop. Then sew the 1st color stop which is the dieline.**

*(You can now use this as a template to cut both the front and back appliqué pieces if you want.)*



**Step 2:**

**After the dieline has sewn, stop the machine and place the top appliqué piece.**

**Start the machine again and embroider the design until the next appliqué placement stop.**

*(If you are using your own fabric be sure to use an adhesive spray to keep the fabric in place.)*



**Step 3:**

**Remove the hoop from your machine. Do not unhoop the design.**

**Turn the hoop over so you are looking at the back of the design.**

**Cut a piece of ribbon long enough that you will be able to hang the design.**

**Fold the ribbon in half and tape the ends inside the design as shown.**

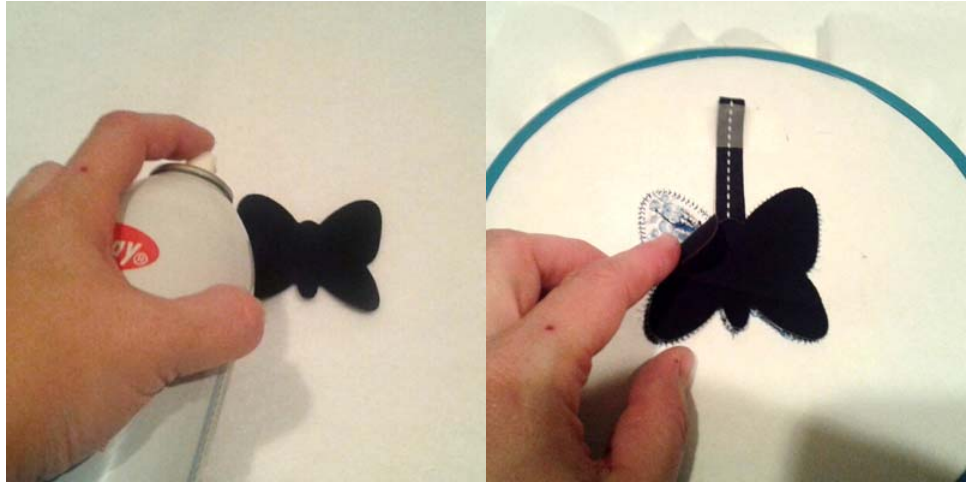


### Step 4:

Now place the bottom appliqué piece on the back of the design making sure that the appliqué piece is secure and will not fall off when you return the hoop to the machine.

Carefully return the hoop to your machine and continue embroidering the design.

(Use spray adhesive if you are not using the PSA Twill.)



### Step 5:

Once the design is completed, remove the design from the machine and the hoop. Tear away the backing and trim any loose threads or raw edges from the design.



**Step 6:**  
Now put the key ring onto  
the ribbon and the keys  
onto the ring.



### Finished Key Chain Charms



Thank you for your purchase.